

## NOTICE TO MARINERS



**Project:** Swansea Bay – UK Civil Hydrography Programme

**Client:** Maritime and Coastguard Agency (MCA)

**Date of Issue:** Wednesday 10<sup>th</sup> January 2018

Scope of Work: Mariners are advised that the survey vessels, *MV Titan Discovery* and *MV Titan Endeavour*, will be conducting a detailed Multibeam Echosounder (MBES) bathymetric survey between Mumbles Head and Port Talbot. The survey is on behalf of the MCA and Vale of Glamorgan Council, as part of the UK Civil Hydrography Programme and will be conducted between January and March 2018 (weather dependant).

Both vessels will be displaying the relevant IRPCS day shapes and night lights and will be restricted in their ability to manoeuvre. No towed gear will be in operation but a safe operating distance is requested around the survey vessel.

Vessel	Compliance
	<p><b>MV TITAN DISCOVERY</b>            MCA SCV Code Category 2 (60 miles from a safe haven)</p>
	<p><b>MV TITAN ENDEAVOUR</b>            MCA SCV Code Category 2 (60 miles from a safe haven)</p>

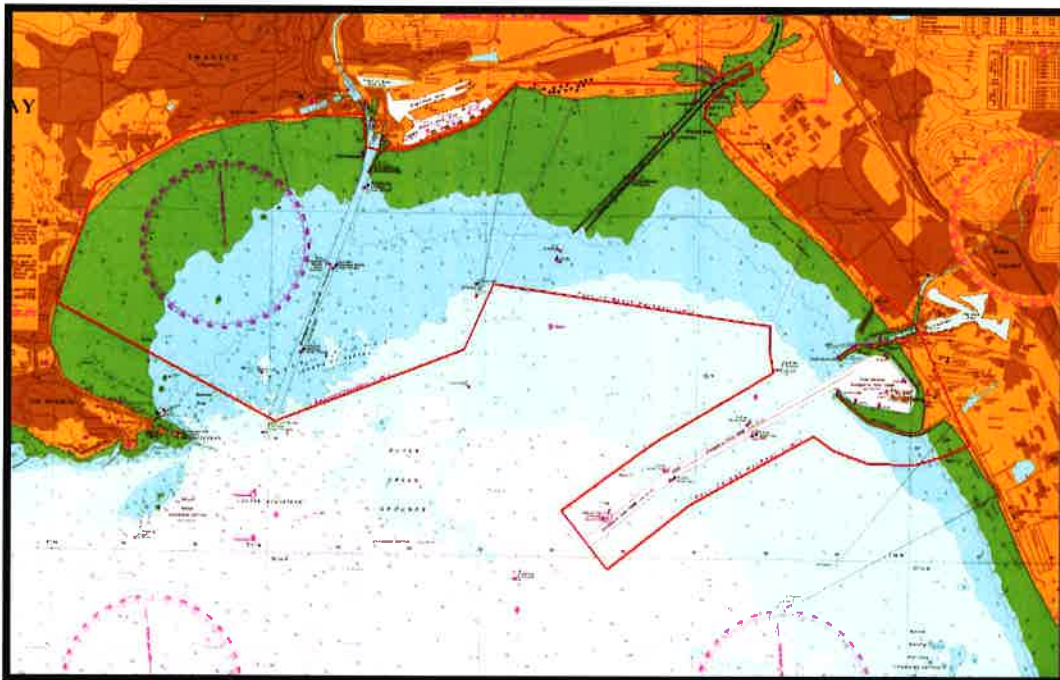
**Vessel contact details:**

MV Titan Discovery	
GSM	07884068450
Email	<a href="mailto:titan.discovery@titansurveys.co.uk">titan.discovery@titansurveys.co.uk</a>
Call Sign	2HCR3
MMSI	235102534
VHF Channel	16

MV Titan Endeavour	
GSM	07764 253364
Email	<a href="mailto:titan.endeavour@titansurveys.co.uk">titan.endeavour@titansurveys.co.uk</a>
Call Sign	2ELT9
MMSI	235086211
VHF Channel	16

**Survey Area:**

HI 1576 – Swansea Bay



**Co-ordinates of operations (WGS84)**

<b>HI1576 - Coordinates – 54.2km<sup>2</sup></b>		
<b>Point</b>	<b>Latitude (N)</b>	<b>Longitude (W)</b>
01	51-35.1684	003-59.9928
02	51-36.2208	003-59.4705
03	51-36.6834	003-58.1844
04	51-36.8229	003-57.0939
05	51-36.8685	003-55.7469
06	51-36.5763	003-55.7022
07	51-36.5523	003-55.5159
08	51-36.5244	003-55.4838
09	51-36.5778	003-55.4031
10	51-36.5745	003-55.1334
11	51-36.8106	003-54.1614
12	51-37.1691	003-53.6046
13	51-37.1712	003-50.9817
14	51-37.3644	003-50.3289
15	51-37.2783	003-50.2632
16	51-37.1784	003-50.6334
17	51-36.9894	003-50.9223
18	51-36.8877	003-50.9427
19	51-35.0559	003-47.9253
20	51-34.0245	003-47.1693
21	51-33.9345	003-47.4894
22	51-33.8472	003-47.9370
23	51-33.8565	003-48.5937
24	51-33.9693	003-49.0767
25	51-34.0896	003-49.3548
26	51-33.4719	003-51.0834
27	51-32.8944	003-52.2249
28	51-33.4047	003-52.8744
29	51-33.8049	003-52.0302
30	51-34.0302	003-51.5439
31	51-34.6419	003-49.9296
32	51-34.8522	003-49.9875
33	51-35.0502	003-49.9836
34	51-35.3877	003-53.8794
35	51-34.8117	003-54.2748
36	51-34.1541	003-56.9139
01	51-35.1684	003-59.9928

Client: Maritime & Coastguard Agency  
Project Title: HI 1576 Swansea Bay  
Titan Report Ref: CS0523\_Notice to Mariners



**Enquiries:**

Any enquiries regarding this notice should be directed to:

Titan Environmental Surveys:

Mark Jenner (Principal Hydrographer)

01656 673673

[mark.jenner@titansurveys.co.uk](mailto:mark.jenner@titansurveys.co.uk)

Gardline GeoSurvey Limited

Oliver Harris (Project Manager)

01493 845600

[oliver.harris@gardline.com](mailto:oliver.harris@gardline.com)