



# **Associated British Ports**

## **South Wales**

### **NOTICE TO MARINERS**

#### **NO 15 OF 2012**

Notice is hereby given that EMU Limited will be deploying oceanographic equipment during w/c 16<sup>th</sup> July at five locations in Swansea Bay.

The vessel *RV Noctiluca* (Call Sign: ZNAL9, MMSI: 235001219) will be engaged in the survey works. At all times the vessel shall comply with the International Regulations for Preventing Collisions at Sea, 1972 (COLREGs). As such, when necessary, the vessel will display lights, shapes and signals in accordance with a vessel classified as being restricted in her ability to manoeuvre.

At each of the five locations an acoustic current profiler (housed in a metal frame) will be deployed on the seabed. The seabed frame will form part of an L-shaped mooring. The position of each profiler will be marked by use of a surface marker buoy (SMB). The SMB will be approximately 50m from the seabed frame. Lighting and navigational aspects of the buoys will be to Trinity House and IALA standards; they will be equipped with radar reflectors and an amber navigation light set to flash 5 times every 20 seconds. Due to the presence of seabed equipment, it is requested that passing vessels give the marker buoy a wide berth of approximately 200m.

#### **Survey Location:**

Figure 1 and Table 1 present the positions of the deployment sites at which the vessel will be operating.

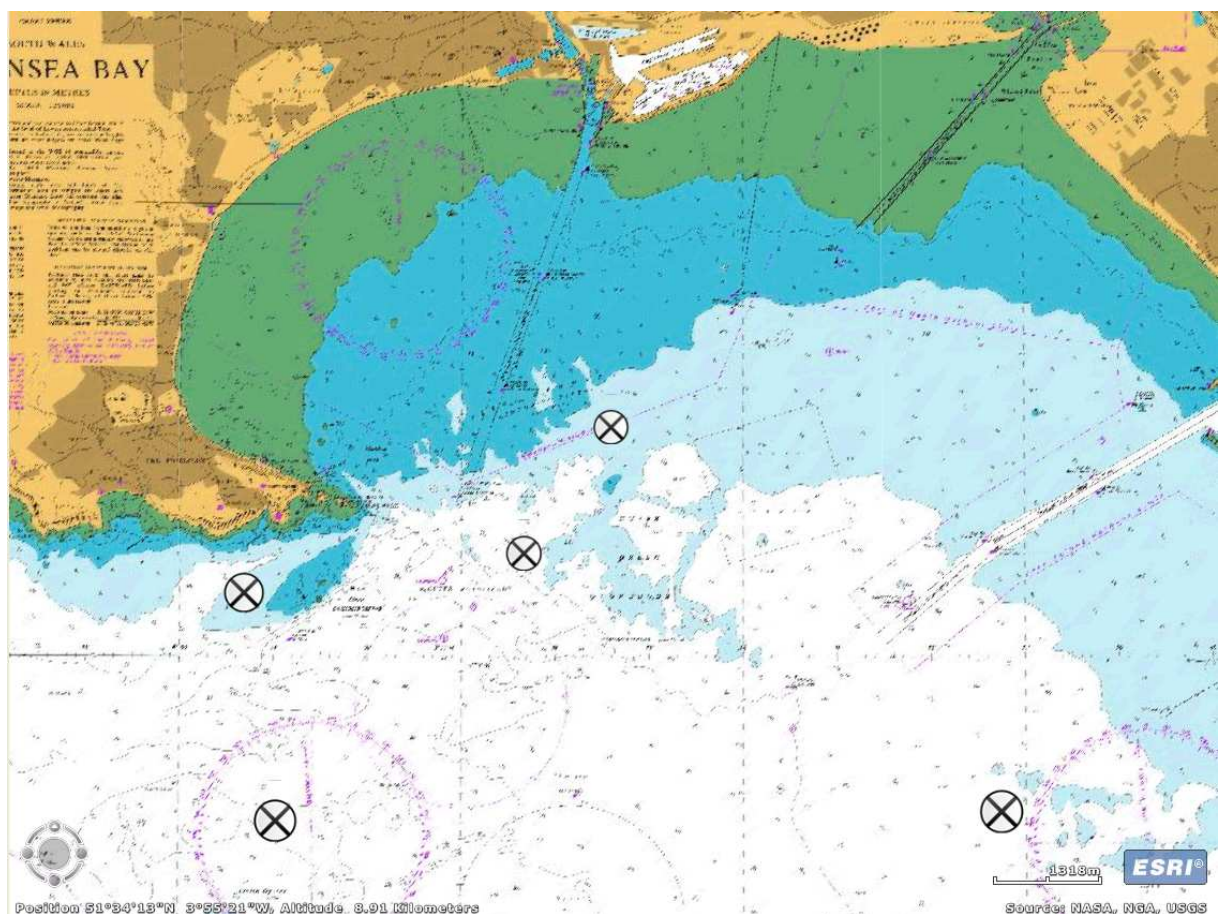


Figure 1. Oceanographic deployment locations

Table 1. Coordinates of oceanographic deployment locations

Location	Latitude	Longitude
Swansea 1	51°33.29'N	003°59.30'W
Swansea 2	51°31.78'N	003°58.96'W
Swansea 3	51°33.56'N	003°56.32'W
Swansea 4	51°34.40'N	003°55.39'W
Swansea 5	51°31.82'N	003°51.25'W

**Point of Contact:**

Any queries about this work should be directed to:

**Jamie Dollman**

Project Manager  
EMU Limited

[jamie.dollman@emulimited.com](mailto:jamie.dollman@emulimited.com)

0044 (0) 2392 205510  
0044 (0) 7979 828386

**Sarah Watt**

MetOcean Operations Manager  
EMU Limited

[sarah.watt@emulimited.com](mailto:sarah.watt@emulimited.com)

0044 (0)2392 205510  
0044 (0)7765 851378

**MARINE MANAGER, SOUTH WALES**  
**Queen Alexandra House, Cargo Road, CARDIFF, CF10 4LY**

10<sup>th</sup> July 2012

**All ABP South Wales Notices to Mariners may be viewed on: - [www.southwalesports.co.uk](http://www.southwalesports.co.uk)**

Masters, Agents and Charters should ensure that the contents of this notice are made known to the masters or persons in charge of their vessel or craft.