



Titan Environmental Surveys Ltd

Titan Environmental Surveys Ltd

Orion House,
Parc Crescent,
Waterton Industrial Estate,
Bridgend,
CF31 3XB
Tel: +44 (0)1656 673673
Fax: +44 (0)1656 673674

ASSOCIATED BRITISH PORTS

NOTICE TO MARINERS

NO 4 OF 2012

Swansea Bay – Seabed Sited Instrumentation

1. General

- **Project:** Swansea Bay Tidal Lagoon Geophysical Survey
- **Developer:** Low Carbon Tidal
- **Contractor:** Titan Environmental Surveys Ltd
- **Date of Issue:** February 2012

Consents are currently being processed by the Welsh Assembly Government.

Further to consent being given, as part of the metocean data gathering survey work associated with the proposed Tidal lagoon in Swansea Bay, Titan Environmental Surveys intend on deploying two seabed frames with scientific equipment in the area

The instrumentation will consist of a frame, approximately 1m high, containing scientific equipment, sited on the seabed and connected to a ground-line which will in turn connect to a mooring weight (See Figure 2 for additional information).

2. Geographic Co-ordinates

Site	Latitude	Longitude	Water Depth (CD)
S1	51° 36.39906'N	3° 53.24268'W	2.6m (above CD)
S2	51° 35.21880'N	3° 54.49296'W	5m

Positions to WGS84. Depths are Charted Depths at position.

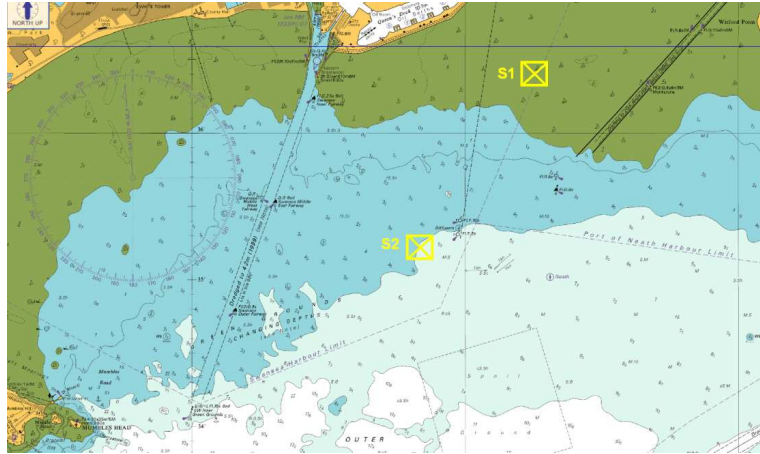


Figure 1 Locations Chart Copyright Maptech

3. Duration of Activity

Notice is hereby given that the seabed instrumentation will be in place from February 2012 for a period of up to 6 months. Please note that all dates are subject to change due to weather restrictions and other factors.

4. Details of buoys/Lights

Sites 1 and 2 will be marked with an IALA compliant Special Mark (yellow buoy exhibiting an 'X'-shaped top mark) and fitted with a Gp.F.I.Y.(5) 20s light and RADAR reflector. The buoys will attach directly to the mooring weight on the seabed and in turn to the instrumentation frame in an L-shaped configuration.

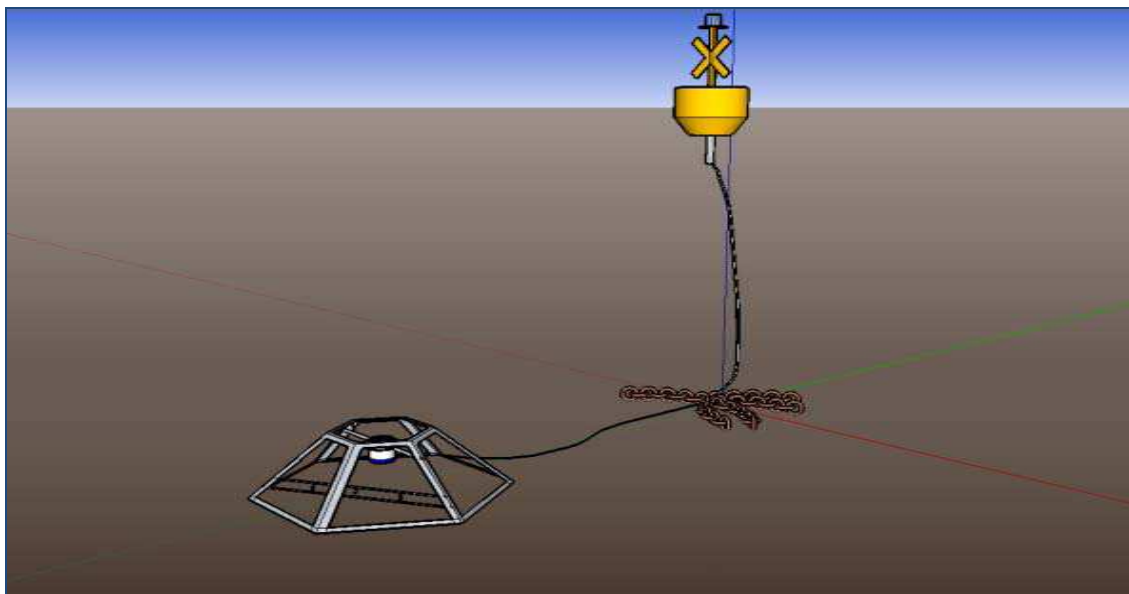


Figure 2 Mooring configuration and instrumentation layout at Sites 1 and 2



Titan Environmental Surveys Ltd

Titan Environmental Surveys Ltd

Orion House,
Parc Crescent,
Waterton Industrial Estate,
Bridgend,
CF31 3XB
Tel: +44 (0)1656 673673
Fax: +44 (0)1656 673674

5. Enquiries

Any enquiries regarding this notice should be directed to:

Gwyn Nelson

Project Manager – Titan Environmental Surveys Ltd

gwyn.nelson@titansurveys.co.uk

+44 (0) 1656 673673

Alex Herbert

Low Carbon Tidal – Planning Team Leader

Alex.herbet@lowcarbondevelopers.com

+44 (0) 1285 380 050

+44 (0) 7554 118 322