



# Associated British Ports South Wales

## NOTICE TO MARINERS

### NO 30 OF 2015

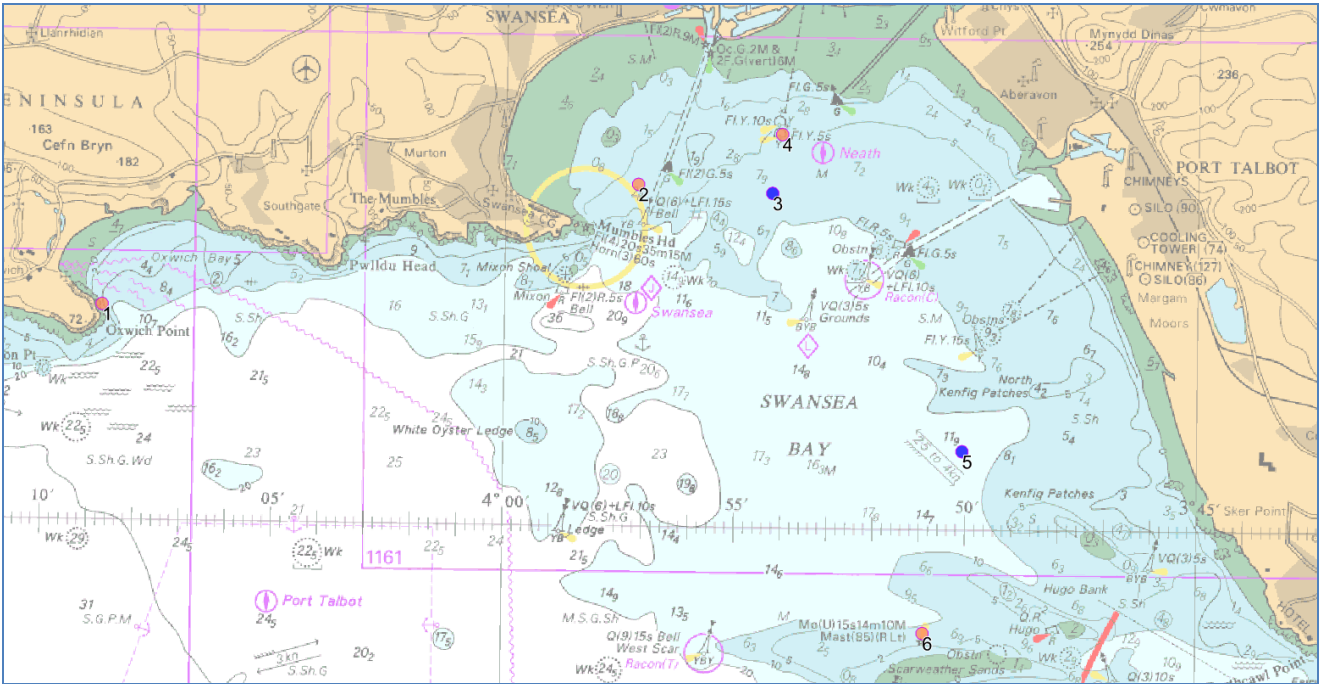
#### Swansea Bay – Seabed Sited Instrumentation

**General** - As part of the metocean data gathering survey work associated with the proposed Tidal lagoon in Swansea Bay, SECAMS will be deploying maintaining seabed based scientific equipment at six sites in the area.

The instrumentation will be sited on the seabed and connected to a ground-line which will in turn connect to a mooring weight. The mooring weight anchors the surface mark.

Site	Description	Charted Depth (m)	Latitude WGS84	Longitude WGS84	Surface Identification
1	Oxwich	2	51° 32.899'N	004° 08.725'W	Pellet/dahn buff
2	Mumbles	3	51° 34.604'N	003° 57.153'W	Pellet/dahn buff
3	New Diffuser	6.5	51° 34.505'N	003° 54.247'W	IALA compliant Special Mark (Yellow buoy, "X" top mark) Light: Gp. F.I.Y (5) 20s
4	Outfall	5	51° 35.298'N	003° 54.048'W	Pellet/dahn buff
5	Kenfig Patches	3.5	51° 31.059'N	003° 50.089'W	IALA compliant Special Mark (Yellow buoy, "X" top mark) Light: Gp. F.I.Y (5) 20s
6	Scarweather	6.5	51° 28.607'N	003° 50.907'W	Pellet/dahn buff

# Mooring Locations in Swansea Bay:



**Dr Hanna K. Nuuttila**  
**SEACAMS**  
**Ystafell 140 Adeilad Wallace Building,**  
**College of Science, Swansea University,**  
**Singleton Park, SA2 8PP**  
[h.k.nuuttila@swansea.ac.uk](mailto:h.k.nuuttila@swansea.ac.uk)