



NOTICE TO MARINERS

No. 43 OF 2016

Notice of Long Term Marine Mammal Observation Programme in the Severn Estuary and Bristol Channel from 1st December 2016

This notice is to inform that Titan Environmental Surveys has provided the following information which has been reviewed and approved by the South Wales Harbour Master.

Titan Environmental Surveys
Parc Crescent
Bridgend
Tel. 01656 673673

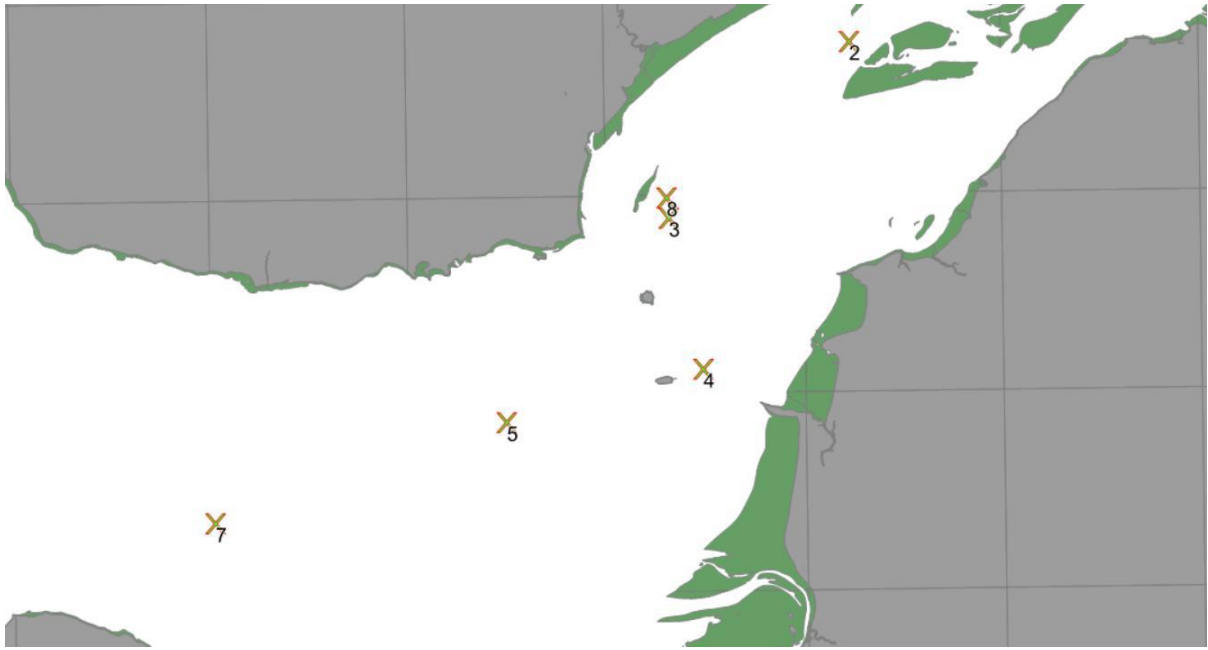


Notice to Mariners – December 2016

General: As part of a marine mammal observation program in the Severn Estuary/Bristol Channel area, Titan Environmental Surveys will be deploying and maintaining seabed based scientific equipment at **six** sites in the area, for an expected period of **12 months**.

The instrumentation will be sited on the seabed and connected to a ground-line which will in turn connect to a mooring weight. The mooring weight anchors the surface mark.

Site	WGS84		UTM 30N		Charted Depth (m)	Surface Identification
	Latitude (°N)	Longitude (°W)	Easting (m)	Northing (m)		
2	51.4936	2.9750	501732.4	5704721.8	5.6	IALA compliant Special Mark (Yellow buoy, "X" top mark) Light: Gp. F.I.Y (5) 20s
3	51.4134	3.1057	492647.0	5695804.0	11	IALA compliant Special Mark (Yellow buoy, "X" top mark) Light: Gp. F.I.Y (5) 20s
4	51.3449	3.0804	494397.3	5688183.7	8	IALA compliant Special Mark (Yellow buoy, "X" top mark) Light: Gp. F.I.Y (5) 20s
5	51.3205	3.2227	484480.0	5685490.0	11	IALA compliant Special Mark (Yellow buoy, "X" top mark) Light: Gp. F.I.Y (5) 20s
7	51.2884	3.4323	469795.9	5680384.5	20	IALA compliant Special Mark (Yellow buoy, "X" top mark) Light: Gp. F.I.Y (5) 20s
8	51.4226	3.1074	492532.0	5696828.0	5	IALA compliant Special Mark (Yellow buoy, "X" top mark) Light: Gp. F.I.Y (5) 20s



HARBOUR MASTER, SOUTH WALES

**Queen Alexandra House
Cargo Road
Cardiff
24th November 2016**