

NOTICE TO MARINERS



Project: Gower Peninsula to Scarweather Sands – UK Civil Hydrography Programme

Client: Maritime and Coastguard Agency (MCA)

Date of Issue: Friday 7th April 2017

Scope of Work: Mariners are advised that the survey vessels, *MV Titan Discovery* and *MV Titan Endeavour*, will be conducting a detailed Multibeam Echosounder (MBES) bathymetric survey from Gower Peninsula to Scarweather Sands. The survey is on behalf of the MCA, as part of the Civil Hydrography Programme and will be conducted between April and July 2017 (weather dependant).

Both vessels will be displaying the relevant IRPCS day shapes and night lights and will be restricted in their ability to manoeuvre. No towed gear will be in operation but a safe operating distance is requested around the survey vessel.

Vessel	Compliance
	<p>MV TITAN DISCOVERY MCA SCV Code Category 2 (60 miles from a safe haven)</p>
	<p>MV TITAN ENDEAVOUR MCA SCV Code Category 2 (60 miles from a safe haven)</p>

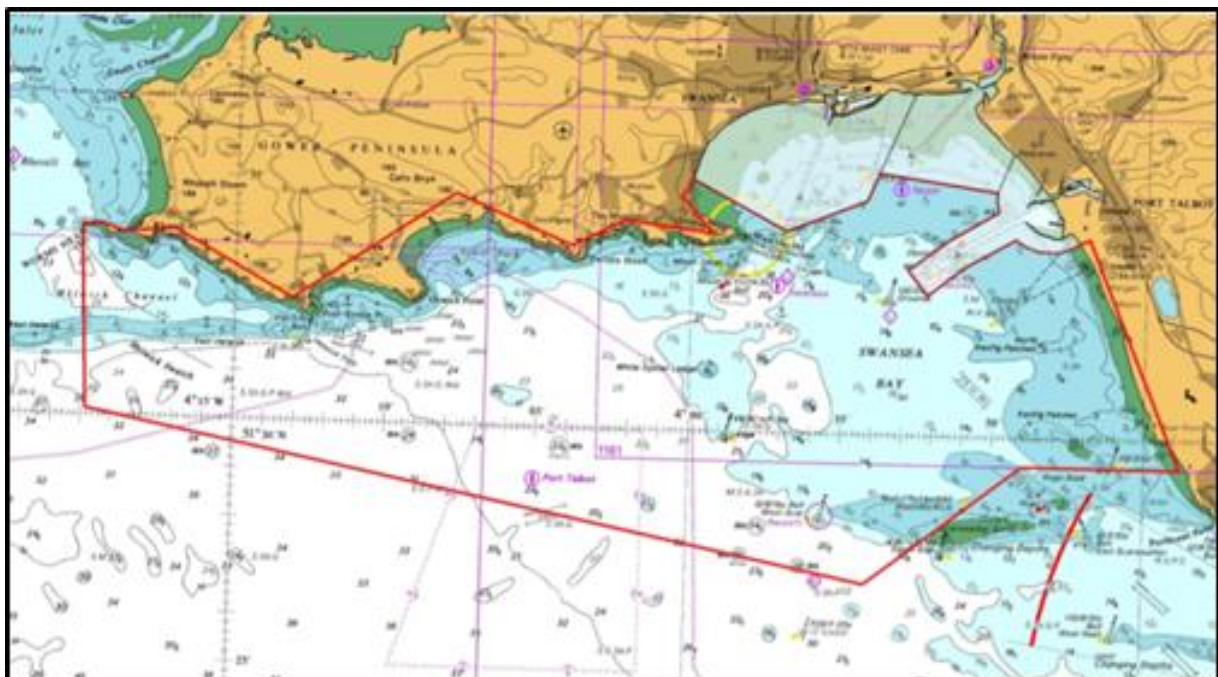
Vessel contact details:

MV Titan Discovery	
GSM	07884068450
Email	titan.discovery@titansurveys.co.uk
Call Sign	2HCR3
MMSI	235102534
VHF Channel	16

MV Titan Endeavour	
GSM	07764 253364
Email	titan.endeavour@titansurveys.co.uk
Call Sign	2ELT9
MMSI	235086211
VHF Channel	16

Survey Area:

HI 1502 – Gower Peninsula to Scarweather Sands



Co-ordinates of operations (WGS84)

HI 1502 – Gower Peninsula to Scarweather Sands				
Polygon Total Area 407 km²				
Point	Latitude D.D (N)	Longitude D.D (- = W)	Latitude D M.M (N)	Longitude D M.M (- = W)
01	51.44884	-3.90214	51 26.930	-003 54.129
02	51.50217	-4.33085	51 30.130	-004 19.851
03	51.56516	-4.33497	51 33.910	-004 20.098
04	51.56548	-4.32476	51 33.929	-004 19.486
05	51.56314	-4.31212	51 33.788	-004 18.727
06	51.56437	-4.28369	51 33.862	-004 17.022
07	51.54183	-4.21869	51 32.510	-004 13.121
08	51.57924	-4.13044	51 34.754	-004 07.826
09	51.56235	-4.06599	51 33.741	-004 03.960
10	51.57165	-4.03694	51 34.299	-004 02.216
11	51.56785	-3.98896	51 34.071	-003 59.338
12	51.58021	-4.00641	51 34.813	-004 00.385
13	51.58614	-3.99988	51 35.169	-003 59.993
14	51.56924	-3.94857	51 34.154	-003 56.914
15	51.58020	-3.90458	51 34.812	-003 54.275
16	51.58980	-3.89799	51 35.388	-003 53.879
17	51.58417	-3.83305	51 35.050	-003 49.983
18	51.58087	-3.83312	51 34.852	-003 49.987
19	51.57736	-3.83216	51 34.642	-003 49.929
20	51.56717	-3.85907	51 34.030	-003 51.544
21	51.55675	-3.88123	51 33.405	-003 52.874
22	51.54825	-3.87042	51 32.895	-003 52.225
23	51.55787	-3.85139	51 33.472	-003 51.083
24	51.56817	-3.82258	51 34.090	-003 49.355
25	51.56619	-3.81796	51 33.971	-003 49.078
26	51.56428	-3.80989	51 33.857	-003 48.594
27	51.56412	-3.79895	51 33.847	-003 47.937
28	51.56558	-3.79149	51 33.935	-003 47.490
29	51.56712	-3.78716	51 34.027	-003 47.230
30	51.56855	-3.78173	51 34.113	-003 46.904
31	51.49011	-3.73043	51 29.407	-003 43.826
32	51.49019	-3.81696	51 29.412	-003 49.018
01	51.44884	-3.90214	51 26.930	-003 54.129

Enquiries:

Any enquiries regarding this notice should be directed to:

Titan Environmental Surveys:

Gardline GeoSurvey Limited

Mark Jenner (Principal Hydrographer)

Oliver Harris (Project Manager)

01656 673673

01493 845600

mark.jenner@titansurveys.co.uk

oliver.harris@gardline.com