

NOTICE TO MARINERS



Project: UK Civil Hydrography Programme – Porthcawl to Cardiff

Client: Maritime Coastguard Agency (MCA)

Survey Period: End of August 2017 to End of March 2018 (weather dependent)

Scope of Work: Mariners are advised that the survey vessels, *MV Titan Discovery* and *MV Titan Endeavour*, will be conducting a detailed Multibeam Echosounder (MBES) bathymetric and grab sampling survey from Porthcawl to Cardiff.

Both vessels will be displaying the relevant IRPCS day shapes and night lights and will be restricted in their ability to manoeuvre. Each vessel will be operating on a 12hr basis, undertaking daylight working operations with scope for working longer shifts on occasion. No towed gear will be in operation but a safe operating distance is requested around the vessels survey vessel.

Vessel	Compliance
	<p>MV TITAN DISCOVERY MCA SCV Code Category 2 (60 miles from a safe haven)</p>
	<p>MV TITAN ENDEAVOUR MCA SCV Code Category 2 (60 miles from a safe haven)</p>

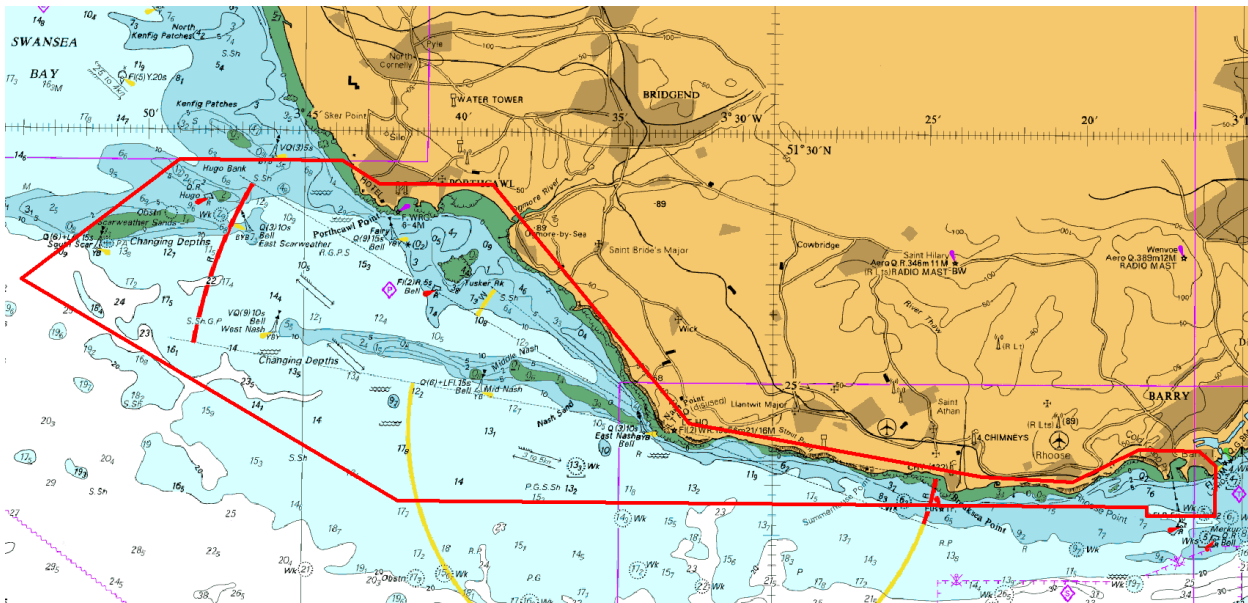
1.1 Vessel contact details:

MV Titan Discovery	
GSM	07884068450
Email	titan.discovery@titansurveys.co.uk
Call Sign	2HCR3
MMSI	235102534
VHF Channel	16

MV Titan Endeavour	
GSM	07764 253364
Email	titan.endeavour@titansurveys.co.uk
Call Sign	2ELT9
MMSI	235086211
VHF Channel	16

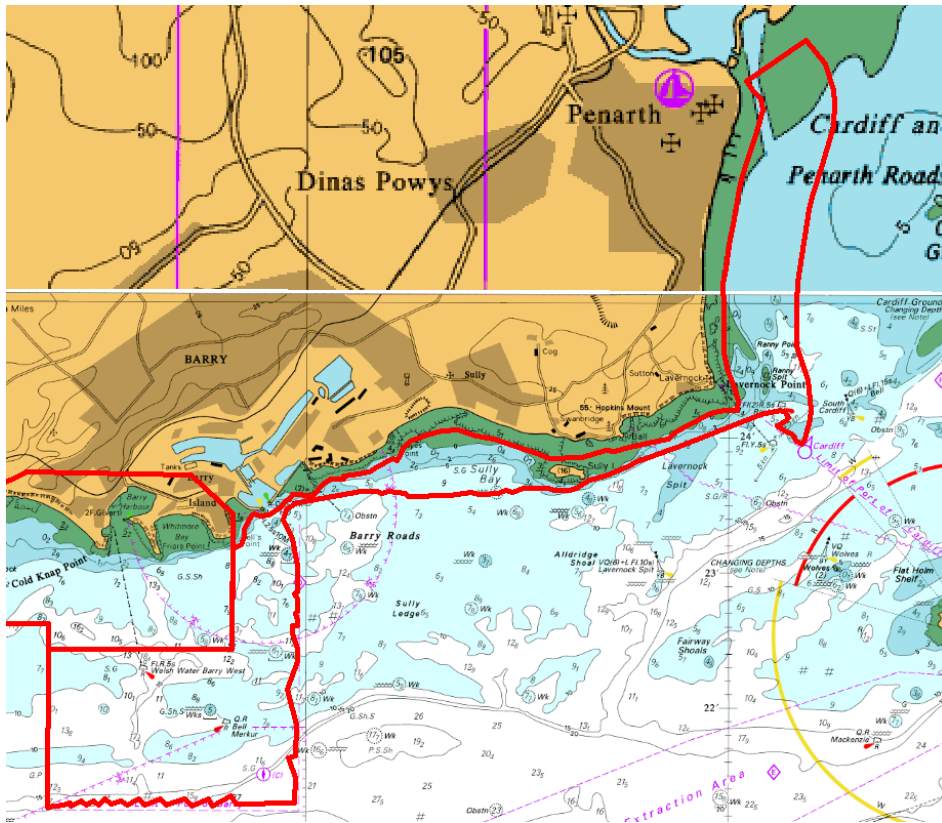
1.2 Survey Area:

HI 1501 – Porthcawl to Barry (Block 1)



HI 1501 – Porthcawl to Barry - Block 1				
Polygon Total Area 235 km ²				
Point	Latitude D.D (N)	Longitude D.D (- = W)	Latitude D M.M (N)	Longitude D M.M (- = W)
1	51.44966	-3.90045	51 26.980	-003 54.027
2	51.49019	-3.81696	51 29.411	-003 49.018
3	51.49011	-3.73043	51 29.407	-003 43.826
4	51.48253	-3.71019	51 28.952	-003 42.611
5	51.48258	-3.65018	51 28.955	-003 39.011
6	51.40372	-3.54445	51 24.223	-003 32.667
7	51.38649	-3.38835	51 23.189	-003 23.301
8	51.38486	-3.34027	51 23.092	-003 20.416
9	51.39566	-3.30536	51 23.740	-003 18.322
10	51.39527	-3.27304	51 23.716	-003 16.382
11	51.39053	-3.26459	51 23.432	-003 15.875
12	51.37378	-3.26472	51 22.427	-003 15.883
13	51.37376	-3.30104	51 22.426	-003 18.062
14	51.37683	-3.30089	51 22.610	-003 18.053
15	51.37714	-3.69928	51 22.628	-003 41.957
1	51.44966	-3.90045	51 26.980	-003 54.027

HI 1501 – Porthcawl to Barry (Block 2)



HI1501 – Porthcawl to Barry (Block 2)		
Total Polygon Area 17km²		
Point	Latitude D. M.m (N)	Longitude D M.m - = W)
1	51° 21.231	-003° 18.060
2	51° 22.423	-003° 18.032
3	51° 22.421	-003° 15.884
4	51° 23.378	-003° 15.841
5	51° 24.029	-003° 13.343
6	51° 24.285	-003° 09.992
7	51° 26.647	-003° 09.819
8	51° 26.983	-003° 08.848
9	51° 23.929	-003° 09.020
10	51° 23.349	-003° 15.197
11	51° 21.268	-003° 15.137
1	51° 21.231	-003° 18.060

Enquiries:

Titan Environmental Surveys:
 Mark Jenner (Principal Hydrographer)

Gardline GeoSurvey Limited
 Oliver Harris (Senior Project Manager)

01656 673673

01493 845600

mark.jenner@titansurveys.co.uk

oliver.harris@gardline.com